

Landsdale Neighbourhood Inventory

A community-led inventory in Ward 3

September 15th, 2022

Dr. Sarah Sheehan

Presented to: Hamilton Municipal Heritage Committee

A community-led project

The Landsdale Neighbourhood Inventory is a community-led project inspired by the recent community-led inventory projects in **Beasley** and **Ancaster**.

Our team:

- Dr. Sarah Sheehan, project lead
- Stefan Spolnik, volunteer coordinator
- Alissa Golden, City of Hamilton liaison
- our wonderful volunteers!



A community-led project

Landsdale is a central Hamilton neighbourhood — east of Beasley and north of Stinson — whose main development dates to the later 19th & early 20th centuries.

Landsdale built heritage:

- commercial & institutional
- residential
- industrial
- places of worship



The Landsdale neighbourhood

Landsdale contains **2,111 properties**.
About 10% have been **inventoried**.

The area includes **two commercial corridors**:

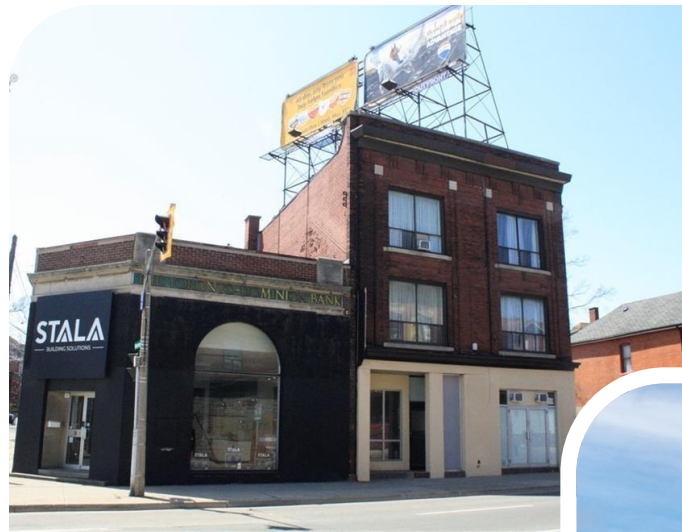
Barton Street East, with its BIA and annual festival...

Photos: Barton Village BIA, Cathie Coward



The Landsdale neighbourhood

...and **King Street East**, on the
route of the future LRT.

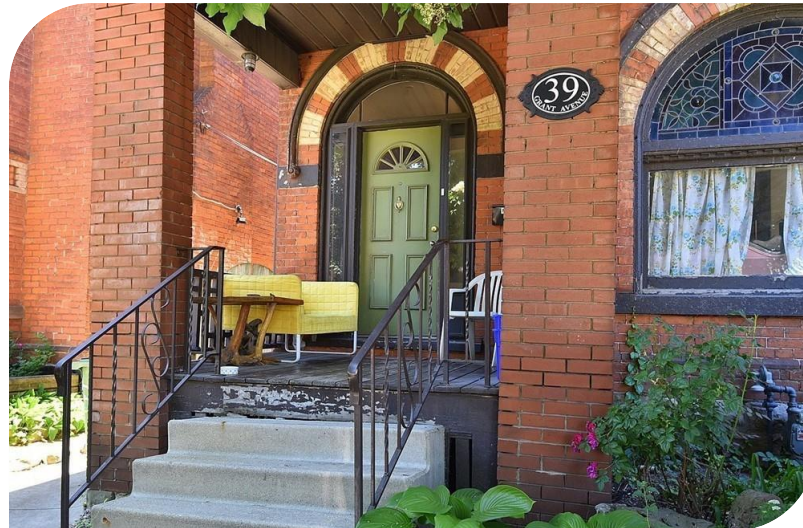
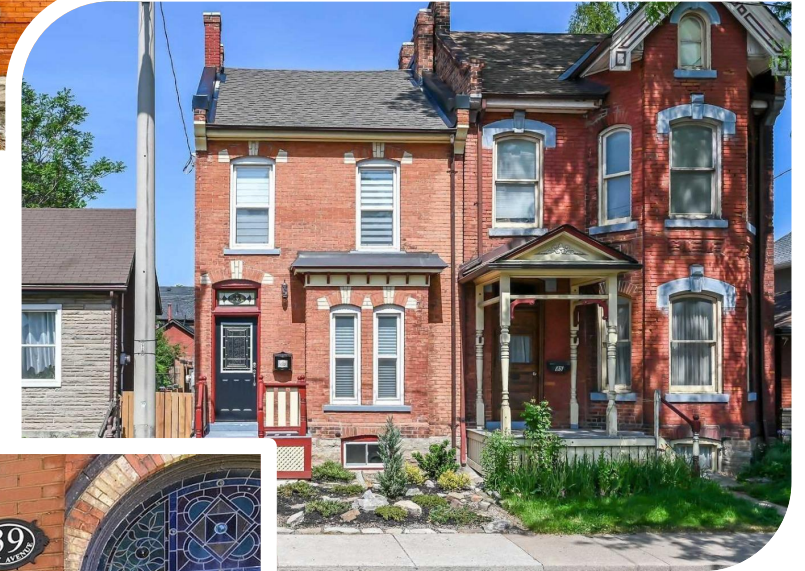


The Landsdale neighbourhood

Landsdale is also a popular
residential neighbourhood.

These photos are from Realtor
listings from the spring & summer.

Photos: Realtor.ca



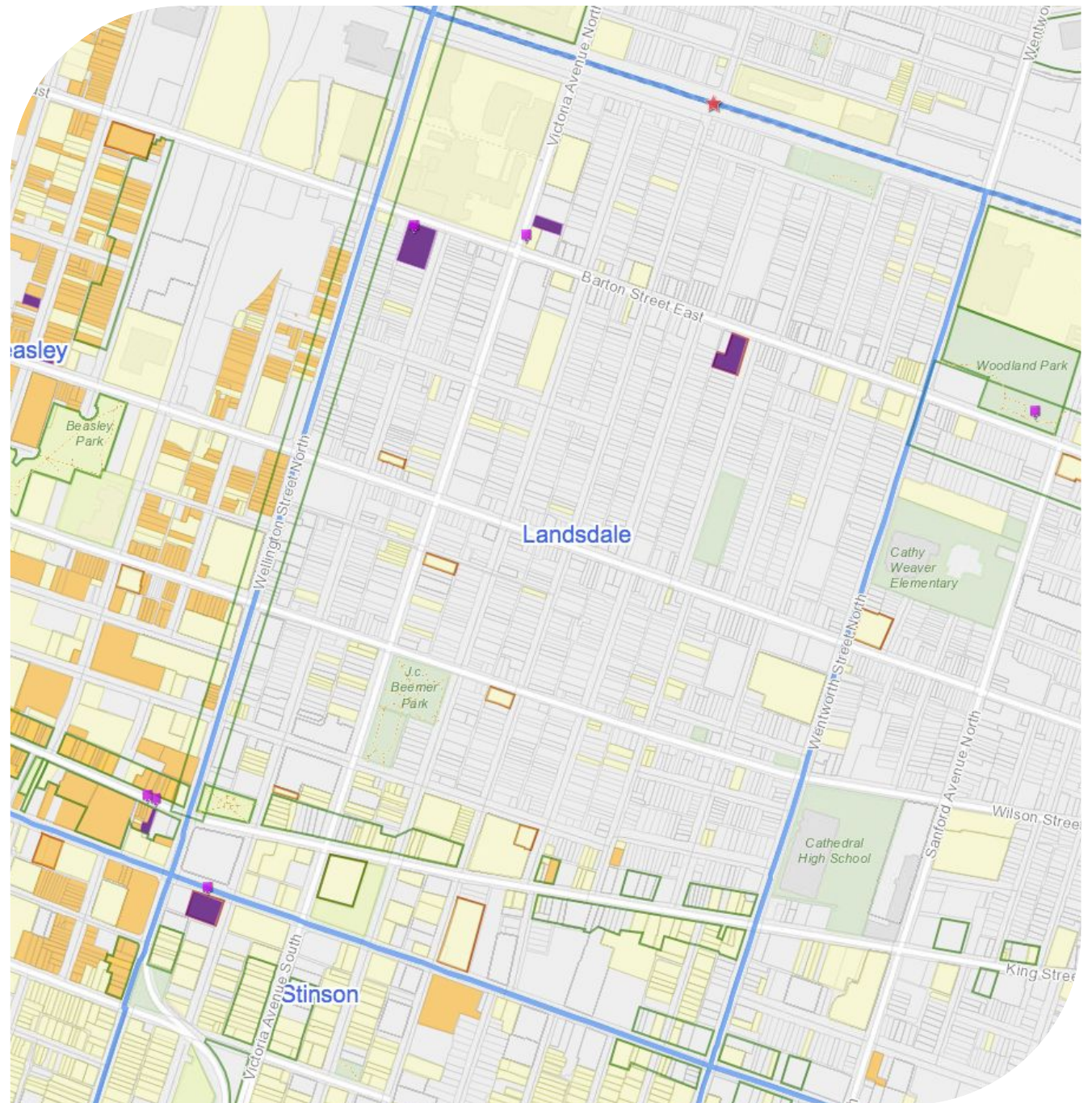
The Landsdale neighbourhood

Landsdale is bounded by:

- **Wellington** to the west (Beasley)
- **Wentworth** to the east (Gibson)
- **Main St. E.** to the south (Stinson)
- **Railway line** to the north (Keith)

The **west side of Wellington** has been inventoried thanks to the **ERA Downtown Inventory** and **Beasley Neighbourhood Inventory**.

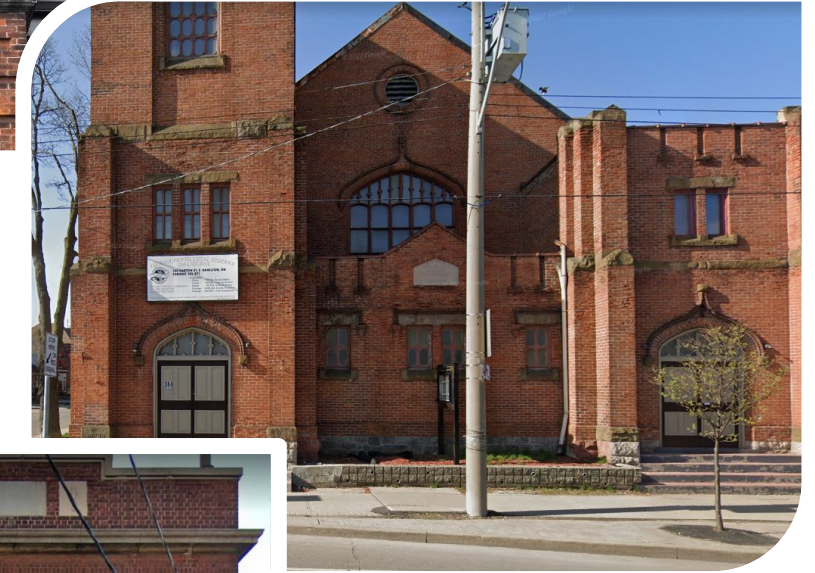
Project volunteers will survey **Main**, **Wentworth**, and the **rail corridor**.



Protected heritage properties in Landsdale

There are currently **three protected properties** in Landsdale:

- **Former West Avenue School**
(designated 1988)
- **Iglesia Pentecostal Hispana / former St. Andrew's Presbyterian & Lincoln Alexander Community Centre** (designated 1988)
- **Babies' Dispensary Guild**
(protected by municipal heritage easement circa 2016)



Uncovering the history of a neighbourhood

Archival photos show the past uses of familiar commercial buildings.

Examples on Barton at Leeming:

Mills Hardware, a Loblaws Groceteria, and a drugstore; and across the street, the **Empire Theatre** circa 1947.



Uncovering the history of a neighbourhood

What surprises could be in store?



Landsdale industrial heritage

Meakins & Sons Factories (King St. E. at West Ave. S.) on an early 20th-century postcard



Landsdale places of worship

Thanks to the Places of Worship inventory, **eight churches and former churches** have been inventoried in the Landsdale neighbourhood.

Two church reuse projects are located just outside the area boundaries, on Main & Wentworth.



A community-led project

Volunteer training took place this week, with **survey work** planned for the **fall season**.

We look forward to sharing updates on this **exciting community-led project**.

For more information:

City of Hamilton Built Heritage Process:
[Hamilton.ca/heritageinventory](https://hamilton.ca/heritageinventory)

GALA Herald, Oct. 2022 (forthcoming):
galaherald.ca





Thank you.